

Minal News 64

September 2025

Communication Building Community

What's Coming Up



MINAL VILLAGE SHOW
SATURDAY AUGUST 30TH

Enter your home grown and homemade fruit, veg, preserves, drinks, flowers, baked goods, crafts & photos.
Entries 50p each - free children's classes too.

Categories listed on the village hall noticeboard

ENTRIES TO VILLAGE HALL BY 10AM FOR JUDGING.
SHOW OPENS TO THE PUBLIC FROM 1PM - 3.30PM (£1)
!refreshments, prizes, competitions!

It's not too late to enter the Village Show!

Contact Milly for more information
- millycarmichael@hotmail.com

Categories for Minal Village Show 2025 - Saturday August 30th

Vegetables

- 3 carrots
- 4 potatoes
- 6 runner beans
- 6 french beans
- 3 onions from sets
- 2 courgettes
- 4 tomatoes
- 6 cherry tomatoes
- 2 cucumbers
- 2 any other veg

Fruit

- 12 berries
- 3 any other fruit

'Other' gardening

- Wonderfully wonky fruit or veg
- Compost
- Vase of up to 12 bee-friendly flowers

Flowers

- 5" or larger pot - plant in flower
- smaller than 5" pot - plant in flower
- 6 french marigolds
- 1 specimen rose
- 3 dahlias
- 6 sweet peas (annuals)
- 1 single bloom (any type)
- 3 any other flowers
- vase of mixed flowers - up to 12 stems

Drinks

- Cordial
- Liqueur
- Fruit juice
- Homemade wine
- Homemade beer

Preserves

- Jelly
- 'Red' fruit jam
- Other fruit jam
- Marmalade
- Chutney
- Pickles
- Baking**
- Cake made with vegetables or fresh fruit
- Classic Victoria sponge (jam filling only)
- Loaf of bread (not with breadmaker)
- 6 scones (sweet or savoury)
- 6 chocolate brownies

Flower Arranging

- theme 'Family'

Photography

- theme 'Wild Life'

Crafts

- A hand knitted item
- A hand crocheted item
- A hand stitched item
- Creative upcycling

Children and Young People

- Under 12s**
- Animal or musical instrument from vegetables / fruit
- Any decorated baked item
- A Scarecrow
- Over 12s**
- A craft item using salt dough or modelling clay
- Any decorated baked item
- A Scarecrow

Summer at the Horseshoe

Always a friendly welcome
Pub Quiz Wednesday 10th Sept. 8pm
£2 per person, max team size of 6



Acoustic Night - Sunday 21st Sept. 6pm
Free Entry. Musicians, poets, performers welcome.

St John the Baptist Church, Minal

Services are held **every**

Sunday morning at 9.00 a.m. Everyone is welcome. Contact Sarah Musgrave at sarahmusgrave99@hotmail.com



Minal Munch

Friday 12th September 3.30-4.30pm Minal village Hall

All are welcome to come along and enjoy a selection of lovely free cakes and refreshments



Harvest Barn Dance
Friday 3rd October
Minal Village Hall



Start practising your moves in preparation for our annual Barn Dance - always fun and a great community event.



WILTSHIRE'S CHURCHES OPEN DAY

13th SEPT 2025

Join us on a bike, on foot or on horseback to help keep Wiltshire's historic churches, chapels and meeting houses looking beautiful and open for the future.

Half of the money you raise for Ride+Stride goes to the church of your choice and the other half to the Wiltshire Historic Churches Trust, enabling us to make grants to local churches to help with urgent repair and maintenance costs.

Choose your own route and travel at your own pace - enjoy the day.

Join Us

Wiltshire Historic Churches Trust

Your Local Organiser: whct.rs@btinternet.com
Contact: 01380 831199

Find out more at: www.wiltshirehistoricchurchestrust.org.uk

What's already happened!



Summer events in Minal enjoyed by all!

Clockwise from the top - 10km Run, the Village Fete (the Dog Show topped the bill again!) and Operation Beach Hut - another hilarious and skilful outdoor Mikron Theatre production

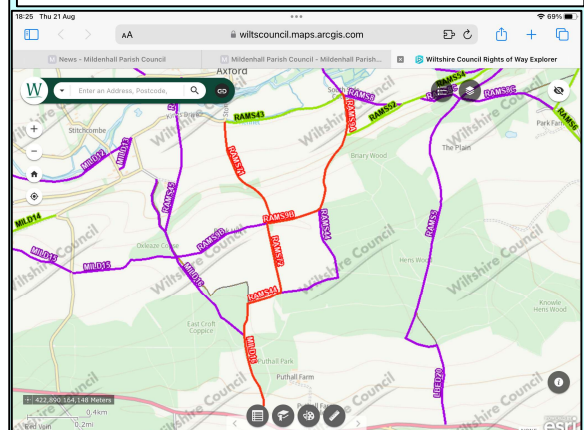
From the Parish Clerk:

A new "Restricted By Way"

A resident using the Wildlife and Countryside act of 1981 requested one of our footpaths and some of Ramsbury's to become a restricted by way. This had to go to the Planning inspectorate and through a lengthy process and has now been approved. Basically, it has redesignated Axford Lane - leading on from Stone Lane and the top of Mildenhall path 16 leading into Savernake forest by Putnam Park which leads down to the A4. A restricted byway can be used on foot, horse or bicycle but not a mechanically propelled vehicle. This link

<https://wiltscouncil.maps.arcgis.com/apps/webappviewer/index.html?id=43d5a86a545046b2b59fd7d49d89d22> takes you to a great map where you can find all the footpaths and byways in Wiltshire.

Extract Showing the new By Way in Red



THE popular Devizes Autumn Fair will once again be featuring unique gifts, clothes and crafts to raise funds for the Wiltshire Bobby Van Trust at The Corn Exchange in Devizes from 10am to 4.30pm on October 3.



**THE WILTSHIRE
BOBBY VAN TRUST**
Registered Charity No: 1153790

Parish Council News ~ Sports and Social Club ~ Church News ~ Village Hall ~ Gardening Club ~ To receive this electronically email Rob Bailey on: robbailey1@aol.com For more information visit www.mildenhallwiltshire.org.uk and Minal Community Facebook The content of this newsletter does not reflect the personal opinions or beliefs of the editing team.